

# GB754

## PNEUDRAULIC INSTALLATION TOOL SERIES

# GAGE BILT

RIVET & LOCKBOLT TOOLS

44766 Centre Ct. Clinton Twp. MI 48038 USA

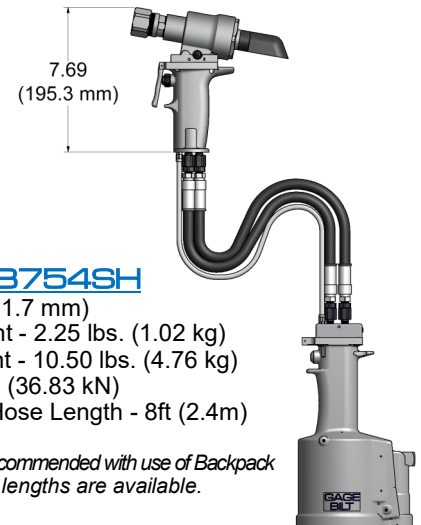
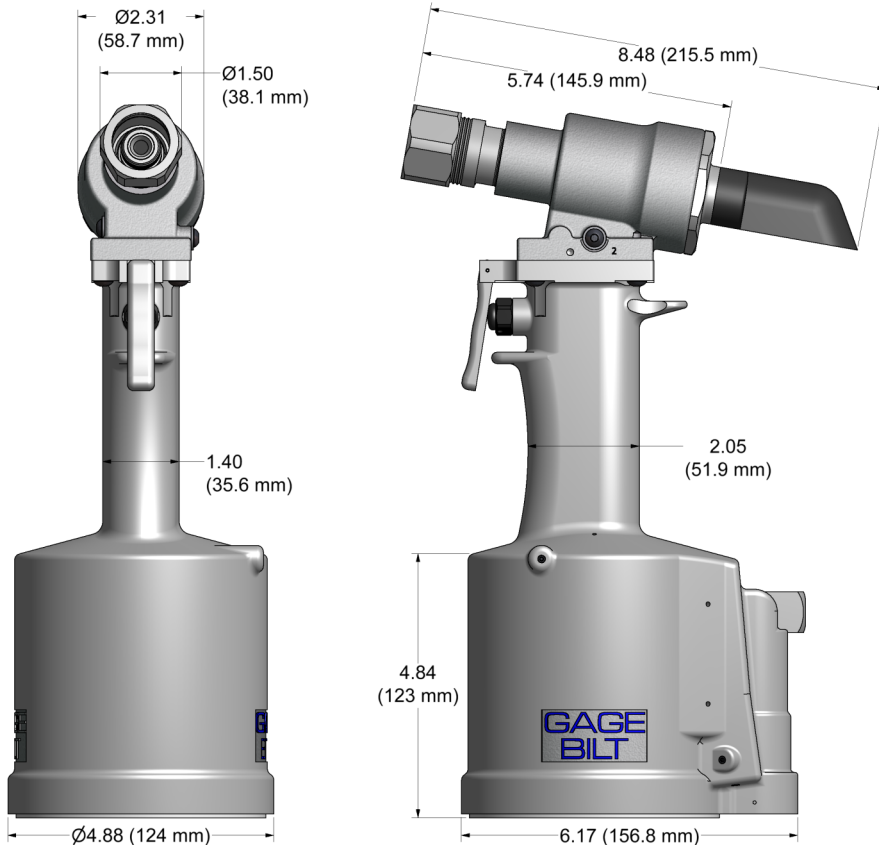
+1 586. 226.1500

+1 586. 226.1505

[solutions@gagebilt.com](mailto:solutions@gagebilt.com)

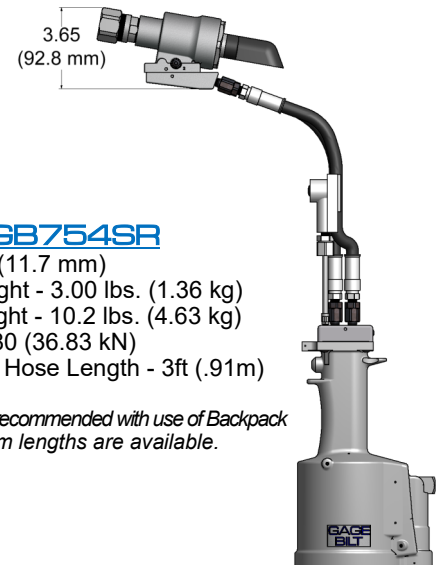
[www.gagebilt.com](http://www.gagebilt.com)

**GB754**  
Stroke - .460" (11.7 mm)  
Hand held weight - 7.20 lbs. (3.26 kg)  
Pull load - 8,280 (36.83 kN)



**GB754SH**  
Stroke - .460" (11.7 mm)  
Hand held weight - 2.25 lbs. (1.02 kg)  
Entire tool weight - 10.50 lbs. (4.76 kg)  
Pull load - 8,280 (36.83 kN)  
Standard Hyd. Hose Length - 8ft (2.4m)

*5ft Hyd. Hoses are recommended with use of Backpack  
Additional custom lengths are available.*



**GB754SR**  
Stroke - .460" (11.7 mm)  
Hand held weight - 3.00 lbs. (1.36 kg)  
Entire tool weight - 10.2 lbs. (4.63 kg)  
Pull load - 8,280 (36.83 kN)  
Standard Hyd. Hose Length - 3ft (.91m)

*5ft Hyd. Hoses are recommended with use of Backpack  
Additional custom lengths are available.*

The **GB754** series are pneumatic-hydraulic installation tools, designed specifically for the efficient installation of blind rivets, lockbolts and MAGNA-GRIP® fasteners. They can be operated in any position and have a rated pull load of 8,280 (36.83 kN) pounds with 90 psi (6.2 bar) air pressure at the air inlet.

The **GB754SH** and **GB754SR** split handle installation tools offer a unique "split" system providing the operator with an ergonomic tool with reduced hand held weight. The **GB754SH** comes with 8 feet (2.4 m) of hose and the **GB754SR** comes with 3 feet (.91 m) of hose. Use with our "NEW" Split-System Backpacks to increase user mobility, ergonomics and productivity. Contact GAGE BILT for more information.

The **GB754** series tools operate on 90 to 100 psi. (6.2 - 6.9 bar) of air pressure, with 90 psi. (6.2 bar) providing the maximum efficiency. At 90 psi. (6.2 bar) of air pressure, the **GB754** series does not exceed 81.5 dB(A) and consumes .30 SCF/cycle (8.50 L/cycle). The air inlet is provided with 1/4 - 18 female pipe thread to accept the users air hose fitting.

**NOSE ASSEMBLIES ARE NOT FURNISHED WITH  
TOOL AND MUST BE ORDERED SEPARATELY**





# GB754 ACCESSORIES



Approved for use on Gage Bilt CE installation tools and/or other manufacturer's CE approved tools of similar design. (Sold Separately)

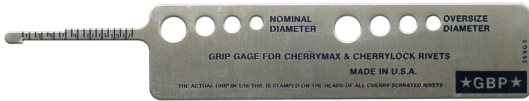
## ACCESSORIES (Sold Separately)

**Air Bleeder Assembly #704153**  
(Sold Separately)      **Catcher Bag-Stem #756610 (Heavy Duty)**  
(Sold Separately)



### Grip Gage #269G3

For CHERRYMAX® and CHERRYLOCK® rivets  
(Sold Separately)



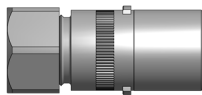
### Grip Gage #GB105093

For NAS LOCKBOLTS and blind fasteners  
(Sold Separately)



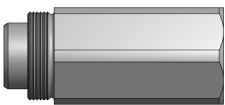
### Adapter Assembly #745751

Adapts all offset 731 and 752 series noses  
(Sold Separately)



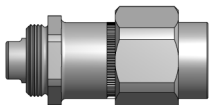
### Adapter Assembly #745208

Adapts all offset 208 series noses.  
(Sold Separately)



### Adapter Assembly #353206-1

Adapts all offset "OSSG" series noses  
(Sold Separately)

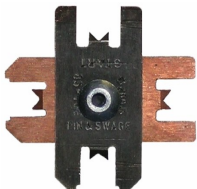


### Riveter Kits Available

Contact Gage Bilt for more information.  
(Sold Separately)



**CE  
Approved**



Gage Bilt also supplies pin & collar swage inspection gages to certify swage installation.  
(Sold Separately)



## NOSE ASSEMBLY CHART

**STRAIGHT**  
(Sold Separately)

**RIGHT ANGLE**  
(Sold Separately)

**OFFSET**  
(Sold Separately)



FASTENER	DIA.	STRAIGHT	**RIGHT ANGLE	*OFFSET	
ASP® ASP 2, ASP FF, ASP 2 F, ASP 2 LC, ASP 4 FF, ASP FF, ASP F, ASP-LC and MAF	13/64 17/64 21/64	ASP06-745C-23 ASP08-745B-23 ASP10-755-23	ASP06-745C-48 ASP08-745B-48 ASP10-755-48	***ASP06-751B-54RA	ASP06-27OSSG ASP08-37OSSG ASP10-37OSSG
BOMB®	1/4	BOMB-755A-23			
COMMERCIAL LOCKBOLTS CBL®, AVDELOK®	3/16 1/4 5/16 3/8	NAS06-2581-12 NAS06-2581-23 NAS08-2581-12 NAS08-2581-23 LB10-745C-26 LB12-756-26	NAS06-2581-48 NAS08-2581-48 NAS10-2581-48 NAS12-756-48		NAS06-25OSSG NAS06-34OSSG NAS08-25OSSG NAS08-34OSSG NAS10-208C-31 NAS12-208A-31
CONTAINER BOLT (R 12) HLFP, HLPM, HLPE, HLPS HLFSC & HLFPM	3/8	HT12-756-23			
FLOOR BOLT	5/16	FT10-353A-28			
LGP® LOCKBOLT	5/32	LGP05-2581-12 LGP05-2581-48	LGP05-2581-23		LGP05-25OSSG LGP05-34OSSG
LGPL25C-V    BACB30VM LGPL183C-V    BACB30XT LGPL45C-V    ABS0548 LGPL25P-V    BACB30VN LGPL45P-V    ASNA2392 LGPL95C-V    BACB30WD LGPL95P-V    BACB30WB LGPL95V    BACB30VY BACB31N    BACB31P	3/16 7/32 1/4 5/16	LGP06-2581-12 LGP06-2581-48 LGP07-2581-12 LGP07-755-48 LGP08-2581-12 LGP08-2581-48 LGP10-2581-12 LGP10-2581-48	LGP06-2581-23 LGP07-755-23		LGP06-34OSSG LGP07-34OSSG LGP07-25OSSG LGP08-34OSSG LGP10-208C-31
MLGP® (MILLIMETER) LOCKBOLT	4mm 5mm 6mm 8mm	MLGP4-2581-12 MLGP4-2581-23 MLGP5-2581-12 MLGP5-2581-23 MLGP6-2581-12 MLGP6-2581-48 MLGP8-2581-12 MLGP8-2581-48	MLGP4-2581-48 MLGP5-2581-48 MLGP6-2581-48 MLGP8-2581-48		MLGP4-25OSSG MLGP4-34OSSG MLGP5-30OSSG MLGP5-34OSSG MLGP6-30OSSG MLGP6-34OSSG
NAS and GP® SHEAR/TENSION LOCKBOLTS	5/32 3/16 1/4 5/16	NASS05-2581-12 NASS05-2581-23 NASS05-2581-48 NAS06-2581-12 NAS06-2581-48 NAS08-2581-12 NAS08-2581-48 NAS10-2581-12 NAS10-2581-48	NAST05-2581-12 NAST05-2581-23 NAST05-2581-48 NAS06-2581-23 NAS06-2581-48 NAS08-2581-23 NAS08-2581-48 NAS10-2581-23 NAS10-2581-48		NASS05-25OSSG NASS05-30OSSG NASS05-34OSSG NAS06-25OSSG NAS06-34OSSG NAS08-25OSSG NAS08-34OSSG NAS10-208C-31
MGP® (MILLIMETER) LOCKBOLT	4mm 5mm 6mm 8mm	MGP4-2581-23 MGP5-2581-23 MGP6-2581-23 MGP8-2581-23	MGP4-2581-48 MGP5-2581-48 MGP6-2581-48 MGP8-2581-48		MGP4-25OSSG MGP4-34OSSG MGP5-30OSSG MGP5-34OSSG MGP6-30OSSG MGP6-34OSSG
MAGNA-GRIP®, MULTI-GRIP, MAXLOK® LOCKBOLTS	3/16 1/4	MG06-745-24 MG08-745-24	MG06-745-48 MG08-745-48		
MAGNA-LOK®, MAGNA-BULB® & HEMLOK® COUNTER SUNK AND PROTRUDING HEAD SIERRA TED STEM STRUCTURAL RIVETS	1/4 5/16 3/8	**MGL08-752A-21 MGL10-353-28 MGL12-353C-28			
OVERSIZE STRUCTURAL RIVET	1/4 5/16 3/8	OS08-353A-48 OS10-756-26 OS12-756A-48	OS10-756-48 OS12-756A-48		
MS90353S & U / MS90354S & U MS21140S & U / MS21141S & U MAXIBOLT®, BACB30Y, YU, & YT CR7000 SERIES BLIND BOLT (SINGLE ACTION) WITH OR WITHOUT DRIVE WASHER	5/32 3/16 1/4	SB05-745C-23 SB06-745B-23 SB08-755-23	SB05-745C-48 SB06-745B-48 SB08-755-48	***SB05-751C-54RA ***SB06-751B-54RA ***SB08-713A-58RA	SB05-27OSSG SB06-27OSSG SB08-27OSSG SB08-205A-35
MS90353S & U / MS90354S & U MS21140S & U / MS21141S & U MAXIBOLT®, BACB30Y, YU, & YT CR7000 SERIES BLIND BOLT (SINGLE ACTION) WITH DRIVE WASHER	5/32 3/16 1/4	UBB05-745C-23 UBB06-745B-23 UBB08-755-23	UBB05-745C-48 UBB06-745B-48 UBB08-755-48	***UBB05-751C-54RA ***UBB06-751B-54RA ***UBB08-713A-58RA	UBB05-27OSSG UBB06-27OSSG UBB08-37OSSG UBB08-37OSSG

ASP®, BOMB®, LGP®, CBL®, GP®, MLGP®, MGP®, UNIMATIC®, MAGNA-LOK®, MAGNA-BULB®, and MAGNA-GRIP® ARE REGISTERED TRADEMARKS OF HOWMET AEROSPACE. AVDELOK®, HEMLOK® AND MAXLOK® ARE REGISTERED TRADEMARKS OF AVDEL UK LIMITED. MAXI-BOLT IS A REGISTERED TRADEMARK OF CHERRY AEROSPACE FASTENERS.

**GAGE BILT CERTIFIES THE GB754 WILL INSTALL THE ABOVE FASTENERS**

See [www.gagebilt.com/nose\\_assemblies.php](http://www.gagebilt.com/nose_assemblies.php) for nose assembly information (data sheets)

\*ALL OFFSET OSSG SERIES NOSES REQUIRE 353206-1 ADAPTER.

\*\*ALL OFFSET 208 SERIES NOSES REQUIRE 745208 ADAPTER.

\*\*\*NOSE REQUIRES 745751 ADAPTER.

\*\*\*\*54RA RIGHT ANGLE SERIES NOSES REQUIRE 745751 ADAPTER WITH 754152 STROKE LIMITER.

\*\*\*\*\*58RA RIGHT ANGLE NOSES REQUIRE 745751 ADAPTER.

NOTE: THE LAST 2 DIGITS OF THE NOSE ASSEMBLY REPRESENTS THE LENGTH THE NOSE EXTENDS FROM THE TOOL. I.E. -20 = 2.0 INCHES

Rev. 10/25

**XX-25OSSG, XX-30OSSG & XX-34OSSG Offset Nose Assemblies are supplied with a one-piece Super Grip Jaw Assembly for dry applications.**

**For wet applications where sealant is used, XX-25OS, XX-30OS & XX-34OS Offset Nose Assemblies will come with loose Jaws, Follower, Spring and Locator for easier cleaning.**

Please note *this only applies* to cartridge style Offset Noses listed above.